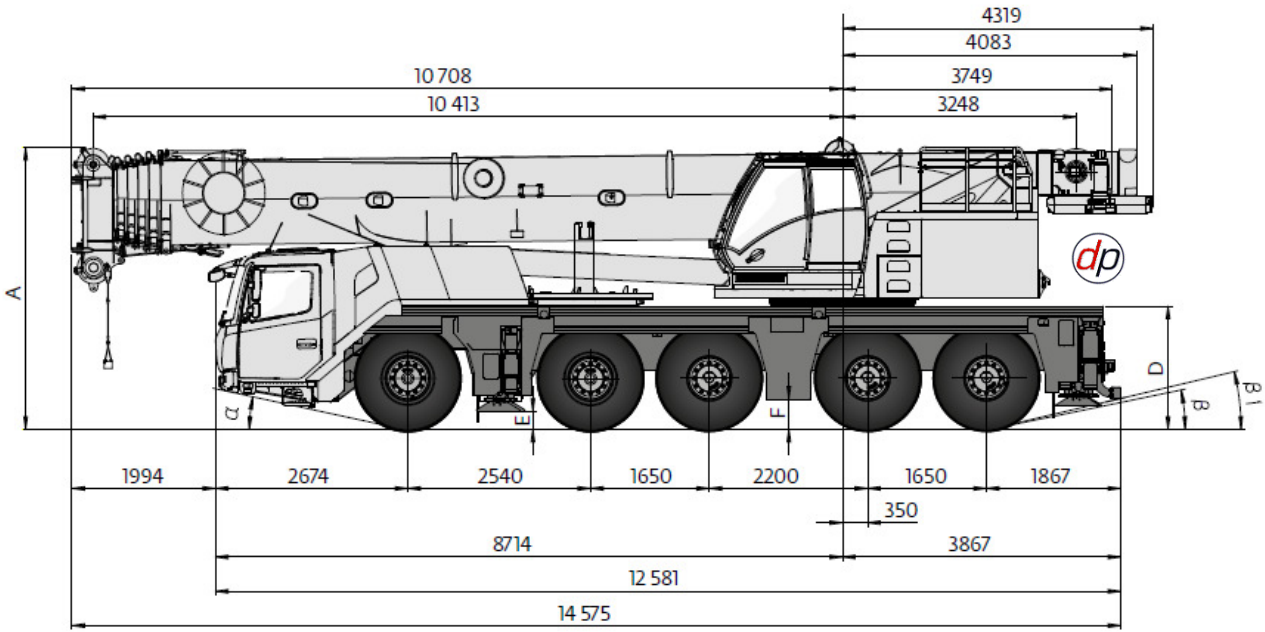


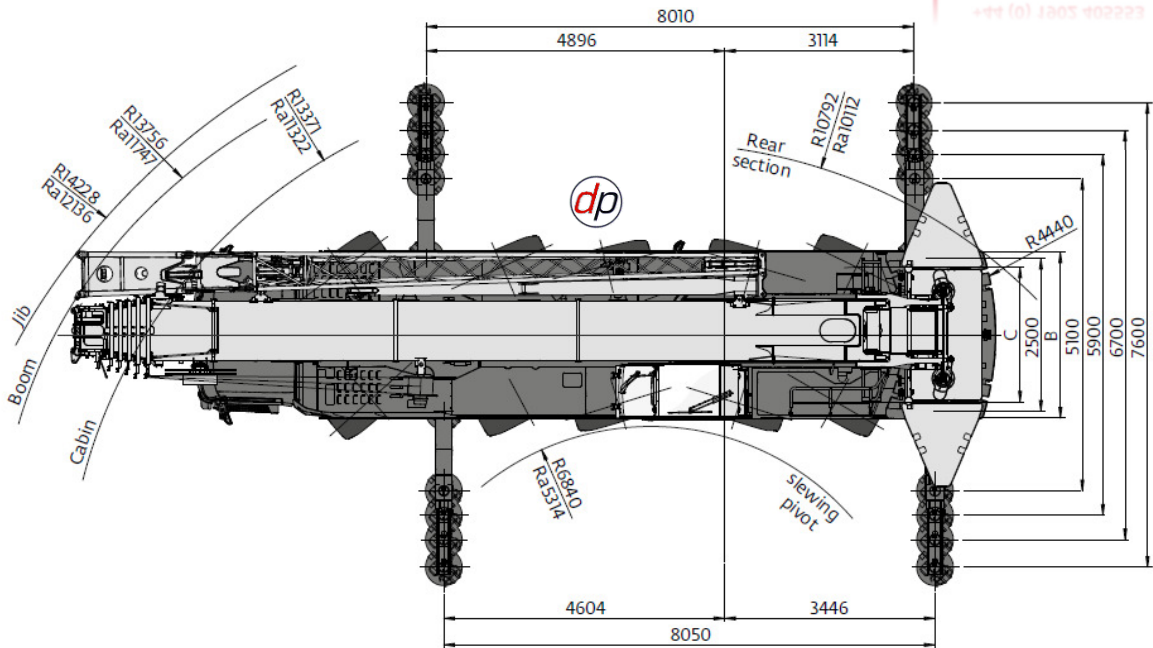
150 TONNE ALL TERRAIN CRANE (GROVE GMK 5150-L)



GROVE
by Manitowoc

GROVE GMK5150L

NEED ADVICE?
We have experienced staff who can help you. We can visit your site to discuss your needs.
+44 (0) 1902 405553



*Ra = Radius all wheels steered • Radius allradgelenkt • Rayon toutes les roues directrices • Radio de giro con todas las ruedas giradas • Raggio di curva con tutte le ruote sterzate
Радіусе поворота при управленні всіма колесами*

| | A | A 105 mm** | B | C | D | E | F | α | β | β ₁ |
|------------|------|---------------|------|------|------|-----|-----|-----|-----|----------------|
| R14,00/R25 | 3935 | 3805 | 2750 | 2298 | 1732 | 272 | 431 | 12° | 12° | 13° |
| R16,00/R25 | 3998 | 3868 | 2750 | 2276 | 1795 | 335 | 494 | 14° | 15° | 16° |
| R20,50/R25 | 3998 | 3868 | 2900 | 2296 | 1795 | 335 | 494 | 14° | 15° | 16° |




** Lowered



150 TONNE ALL TERRAIN CRANE (GROVE GMK 5150-L)

 12,8 - 60,0 m
  7,6 m
  360°
  30,9 t
 BALLAST AS CARRIED FOR UK ROAD TRAVEL.

  EN 13000

| m | 12,8 | 18,0 | 23,3 | 27,9 | 32,6 | 37,0 | 40,3 | 43,5 | 47,2 | 51,1 | 54,8 | 57,9 | 60,0 | m |
|------|-------|-------|------|------|------|------|------|------|------|------|------|------|------|------|
| 3,0 | 107,0 | 106,0 | 89,5 | 65,0 | | | | | | | | | | 3,0 |
| 4,0 | 90,0 | 90,0 | 86,5 | 65,0 | 52,0 | | | | | | | | | 4,0 |
| 5,0 | 77,5 | 77,5 | 77,0 | 64,0 | 52,0 | 40,0 | 33,0 | | | | | | | 5,0 |
| 6,0 | 68,0 | 68,5 | 67,5 | 60,0 | 51,5 | 40,0 | 33,0 | 27,5 | | | | | | 6,0 |
| 7,0 | 58,0 | 58,5 | 57,5 | 55,0 | 48,5 | 40,0 | 33,0 | 27,5 | 23,5 | | | | | 7,0 |
| 8,0 | 50,0 | 50,5 | 49,5 | 50,0 | 45,5 | 39,0 | 33,0 | 27,5 | 23,5 | 18,7 | 15,6 | 12,7 | | 8,0 |
| 9,0 | 43,5 | 44,5 | 44,0 | 44,0 | 42,5 | 37,0 | 32,0 | 27,5 | 23,5 | 18,7 | 15,6 | 12,7 | 11,8 | 9,0 |
| 10,0 | 38,5 | 40,0 | 39,5 | 39,0 | 38,0 | 34,5 | 30,5 | 27,5 | 23,5 | 18,7 | 15,6 | 12,7 | 11,8 | 10,0 |
| 11,0 | | 35,5 | 35,0 | 34,0 | 33,5 | 32,5 | 29,0 | 26,5 | 23,5 | 18,7 | 15,6 | 12,7 | 11,8 | 11,0 |
| 12,0 | | 32,0 | 31,5 | 31,0 | 30,0 | 30,0 | 27,0 | 25,0 | 23,0 | 18,7 | 15,6 | 12,7 | 11,8 | 12,0 |
| 13,0 | | 28,5 | 29,0 | 29,0 | 27,0 | 27,0 | 25,5 | 24,0 | 22,0 | 18,7 | 15,6 | 12,7 | 11,8 | 13,0 |
| 14,0 | | 25,5 | 26,0 | 26,0 | 24,5 | 24,5 | 23,5 | 23,0 | 21,0 | 18,3 | 15,6 | 12,7 | 11,8 | 14,0 |
| 15,0 | | 22,0 | 23,0 | 23,0 | 23,0 | 22,5 | 21,5 | 21,0 | 19,9 | 17,5 | 15,6 | 12,7 | 11,8 | 15,0 |
| 16,0 | | | 21,0 | 21,0 | 21,5 | 20,5 | 19,6 | 19,1 | 18,9 | 16,7 | 15,2 | 12,7 | 11,8 | 16,0 |
| 18,0 | | | 17,7 | 18,2 | 17,9 | 17,3 | 17,5 | 16,1 | 16,3 | 15,3 | 14,2 | 12,1 | 11,8 | 18,0 |
| 20,0 | | | 13,3 | 15,4 | 15,1 | 14,9 | 15,0 | 13,8 | 14,0 | 13,6 | 13,2 | 11,3 | 11,3 | 20,0 |
| 22,0 | | | | 13,1 | 12,8 | 13,3 | 12,7 | 12,8 | 12,1 | 11,9 | 12,0 | 10,5 | 10,6 | 22,0 |
| 24,0 | | | | 11,3 | 11,0 | 11,4 | 10,9 | 11,2 | 10,8 | 10,9 | 10,5 | 9,7 | 9,9 | 24,0 |
| 26,0 | | | | | 9,5 | 9,9 | 10,1 | 9,7 | 9,7 | 9,6 | 9,3 | 9,0 | 9,0 | 26,0 |
| 28,0 | | | | | 8,2 | 8,7 | 8,9 | 8,4 | 8,5 | 8,3 | 8,1 | 8,2 | 8,0 | 28,0 |
| 30,0 | | | | | 5,9 | 7,6 | 7,9 | 7,7 | 7,4 | 7,3 | 7,5 | 7,2 | 7,0 | 30,0 |
| 32,0 | | | | | | 6,7 | 7,0 | 7,0 | 6,5 | 6,4 | 6,5 | 6,3 | 6,2 | 32,0 |
| 34,0 | | | | | | 5,8 | 6,2 | 6,2 | 5,8 | 5,6 | 5,8 | 5,5 | 5,4 | 34,0 |
| 36,0 | | | | | | | 5,5 | 5,5 | 5,3 | 4,9 | 5,1 | 4,8 | 4,7 | 36,0 |
| 38,0 | | | | | | | 4,1 | 4,9 | 4,8 | 4,3 | 4,5 | 4,2 | 4,1 | 38,0 |
| 40,0 | | | | | | | | 4,5 | 4,3 | 3,8 | 3,9 | 3,7 | 3,5 | 40,0 |
| 42,0 | | | | | | | | 4,0 | 3,8 | 3,3 | 3,4 | 3,2 | 3,1 | 42,0 |
| 44,0 | | | | | | | | | 3,3 | 2,9 | 3,0 | 2,7 | 2,6 | 44,0 |
| 46,0 | | | | | | | | | 3,0 | 2,5 | 2,6 | 2,3 | 2,2 | 46,0 |
| 48,0 | | | | | | | | | 2,6 | 2,1 | 2,2 | 2,0 | 1,8 | 48,0 |
| 50,0 | | | | | | | | | | | 1,9 | 1,6 | 1,5 | 50,0 |
| 52,0 | | | | | | | | | | | 1,6 | 1,3 | 1,2 | 52,0 |
| 54,0 | | | | | | | | | | | | 1,0 | | 54,0 |

 12,8 - 60,0 m
  7,6 m
  360°
  44,5 t
 REQUIRES EXTRA BALLAST DELIVERY BY TRANSPORT.

  EN 13000

| m | 12,8 | 18,0 | 23,3 | 27,9 | 32,6 | 37,0 | 40,3 | 43,5 | 47,2 | 51,1 | 54,8 | 57,9 | 60,0 | m |
|------|--------|-------|------|------|------|------|------|------|------|------|------|------|------|------|
| 3,0 | 150,0* | | | | | | | | | | | | | 3,0 |
| 3,0 | 108,0 | 106,0 | 89,5 | 65,0 | | | | | | | | | | 3,0 |
| 4,0 | 91,5 | 91,5 | 86,5 | 65,0 | 52,0 | | | | | | | | | 4,0 |
| 5,0 | 78,5 | 78,5 | 78,5 | 64,0 | 52,0 | 40,0 | 33,0 | | | | | | | 5,0 |
| 6,0 | 69,0 | 69,5 | 68,5 | 60,0 | 51,5 | 40,0 | 33,0 | 27,5 | | | | | | 6,0 |
| 7,0 | 61,0 | 61,5 | 60,5 | 55,0 | 48,5 | 40,0 | 33,0 | 27,5 | 23,5 | | | | | 7,0 |
| 8,0 | 54,5 | 55,5 | 54,5 | 50,5 | 45,5 | 39,0 | 33,0 | 27,5 | 23,5 | 18,7 | 15,6 | 12,7 | | 8,0 |
| 9,0 | 48,0 | 48,5 | 47,5 | 47,0 | 42,5 | 37,0 | 32,0 | 27,5 | 23,5 | 18,7 | 15,6 | 12,7 | 11,8 | 9,0 |
| 10,0 | 42,0 | 43,0 | 42,0 | 42,5 | 39,5 | 34,5 | 30,5 | 27,5 | 23,5 | 18,7 | 15,6 | 12,7 | 11,8 | 10,0 |
| 11,0 | | 38,5 | 37,5 | 38,0 | 37,0 | 32,5 | 29,0 | 26,5 | 23,5 | 18,7 | 15,6 | 12,7 | 11,8 | 11,0 |
| 12,0 | | 35,0 | 35,0 | 34,5 | 34,5 | 30,5 | 27,0 | 25,0 | 23,0 | 18,7 | 15,6 | 12,7 | 11,8 | 12,0 |
| 13,0 | | 32,0 | 31,5 | 31,5 | 32,0 | 29,0 | 25,5 | 24,0 | 22,0 | 18,7 | 15,6 | 12,7 | 11,8 | 13,0 |
| 14,0 | | 29,5 | 29,0 | 28,5 | 29,0 | 27,5 | 24,0 | 23,0 | 21,0 | 18,3 | 15,6 | 12,7 | 11,8 | 14,0 |
| 15,0 | | 26,0 | 26,5 | 26,5 | 27,0 | 26,0 | 22,5 | 21,5 | 19,9 | 17,5 | 15,6 | 12,7 | 11,8 | 15,0 |
| 16,0 | | | 24,5 | 24,0 | 25,0 | 24,5 | 21,5 | 20,5 | 18,9 | 16,7 | 15,2 | 12,7 | 11,8 | 16,0 |
| 18,0 | | | 22,0 | 21,5 | 21,5 | 22,0 | 19,2 | 18,5 | 17,3 | 15,3 | 14,2 | 12,1 | 11,8 | 18,0 |
| 20,0 | | | 16,9 | 18,7 | 18,1 | 18,9 | 17,3 | 16,7 | 15,8 | 14,1 | 13,2 | 11,3 | 11,3 | 20,0 |
| 22,0 | | | | 16,0 | 16,1 | 16,2 | 15,5 | 15,1 | 14,5 | 13,0 | 12,3 | 10,5 | 10,6 | 22,0 |
| 24,0 | | | | 13,9 | 14,7 | 14,1 | 14,2 | 13,7 | 13,4 | 12,0 | 11,4 | 9,7 | 9,9 | 24,0 |
| 26,0 | | | | | 12,9 | 12,3 | 12,8 | 11,9 | 12,3 | 11,1 | 10,5 | 9,0 | 9,2 | 26,0 |
| 28,0 | | | | | 11,4 | 11,3 | 11,3 | 10,5 | 10,9 | 10,3 | 9,8 | 8,4 | 8,5 | 28,0 |
| 30,0 | | | | | 7,6 | 10,6 | 10,0 | 9,9 | 9,6 | 9,6 | 9,1 | 7,7 | 7,9 | 30,0 |
| 32,0 | | | | | | 9,5 | 8,9 | 9,2 | 8,5 | 8,5 | 8,3 | 7,2 | 7,4 | 32,0 |
| 34,0 | | | | | | 7,6 | 8,0 | 8,2 | 7,6 | 7,6 | 7,8 | 6,8 | 6,9 | 34,0 |
| 36,0 | | | | | | | 7,3 | 7,4 | 7,1 | 6,9 | 7,1 | 6,4 | 6,4 | 36,0 |
| 38,0 | | | | | | | 6,1 | 6,7 | 6,7 | 6,5 | 6,4 | 6,1 | 6,0 | 38,0 |
| 40,0 | | | | | | | | 6,0 | 6,1 | 6,0 | 5,7 | 5,7 | 5,5 | 40,0 |
| 42,0 | | | | | | | | 5,0 | 5,5 | 5,4 | 5,1 | 5,3 | 5,1 | 42,0 |
| 44,0 | | | | | | | | | 5,0 | 4,8 | 4,6 | 4,7 | 4,6 | 44,0 |
| 46,0 | | | | | | | | | 3,7 | 4,4 | 4,3 | 4,2 | 4,1 | 46,0 |
| 48,0 | | | | | | | | | 3,2 | 3,9 | 4,0 | 3,8 | 3,7 | 48,0 |
| 50,0 | | | | | | | | | | | 3,7 | 3,4 | 3,3 | 50,0 |
| 52,0 | | | | | | | | | | | 3,3 | 3,0 | 2,9 | 52,0 |
| 54,0 | | | | | | | | | | | | 2,7 | 2,6 | 54,0 |
| 56,0 | | | | | | | | | | | | | 2,3 | 56,0 |

* Over rear with special equipment • Nach hinten mit Sonderausüstung • En arrière avec équipement supplémentaire • Por la parte trasera con equipo adicional
Sul posteriore con equipaggiamento ausiliario • На задней частью со специальным оборудованием